

Option MCM7 is a CD Rom and Communications Interface Box enabling the PowerWizard 2.0/3.0 control panels to be remotely accessed through a personal computer (PC).

Via a hard, two-wire cable, this software can be used at a distance of up to 1,000 metres from the generating set control panel, providing the user with optimal flexibility and convenience in controlling and monitoring their generating set(s).

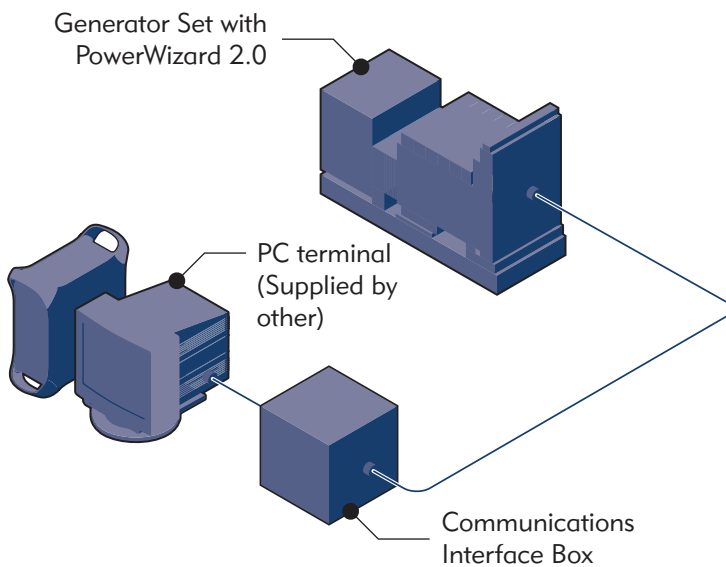
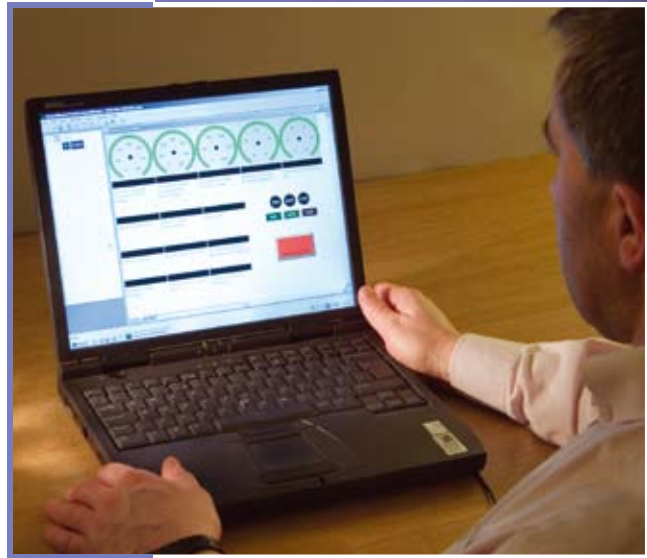
If you require remote access from a distance greater than 1,000 metres, please refer to Option MCM8.

The user friendly CD Rom is designed specifically for the PowerWizard 2.0/3.0 control panels. Upon installation of the CD Rom, a virtual control panel on the PC allows the user access to all functions of the PowerWizard 2.0/3.0 control panels, as if the user was located the generating set itself.

Option MCM8 offers users of PowerWizard 2.0/3.0 control panels a much greater freedom to control and monitor generating sets located at distance from central office.



Computer Interface for PowerWizard 2.0



MCM7



FG Wilson has manufacturing facilities in the following locations:

Northern Ireland • Brazil • China • India • USA

With headquarters in Northern Ireland, FG Wilson operates through a Global Dealer Network. To contact your local Sales Office please visit the FG Wilson website at www.FGWilson.com

